

|  |   |
|--|---|
| Famiglia<br>Family                         | Miscelatore a muro con bocca integrata<br>Built-in mixer with integrated spout                                  |
| Codice Articolo<br>Article Code            | 24 20   |
| Descrizione<br>Description                 | Miscelatore progressivo a parete con bocca erogazione integrata<br>Progressive wall mixer with integrated spout |
| Cartuccia<br>Cartridge                     | CR034   |
| Materiale<br>Material                      | Acciaio inossidabile AISI316L<br>AISI316L Stainless steel   |
| Imballo<br>Packaging                       | Scatola avana, imballaggio bolle d'aria<br>Brown box packaging, bubble wrap                                     |
| Peso con Imballo<br>Weight with Packaging  | 1,480kg   |
| Dimensione Imballo<br>Packaging Dimensions | I375Xd150Xh70   |

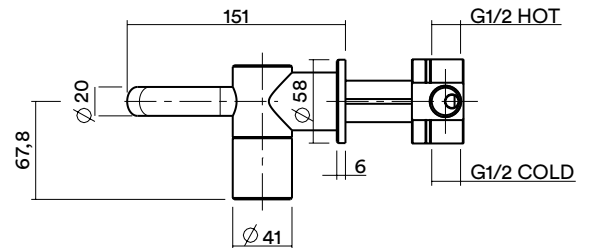
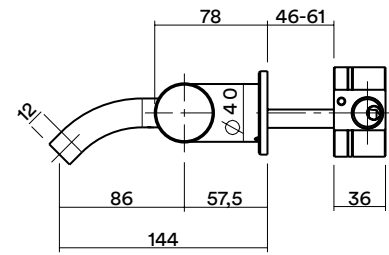


Immagine Prodotto  
Product Image



Portata  
Flow rate

